

Comments on the IMR54.

Please change the following resistor values:

R110 13.6 Ohms

R111 13.6 Ohms

R113 6.85 Ohms

R114 6.85 Ohms

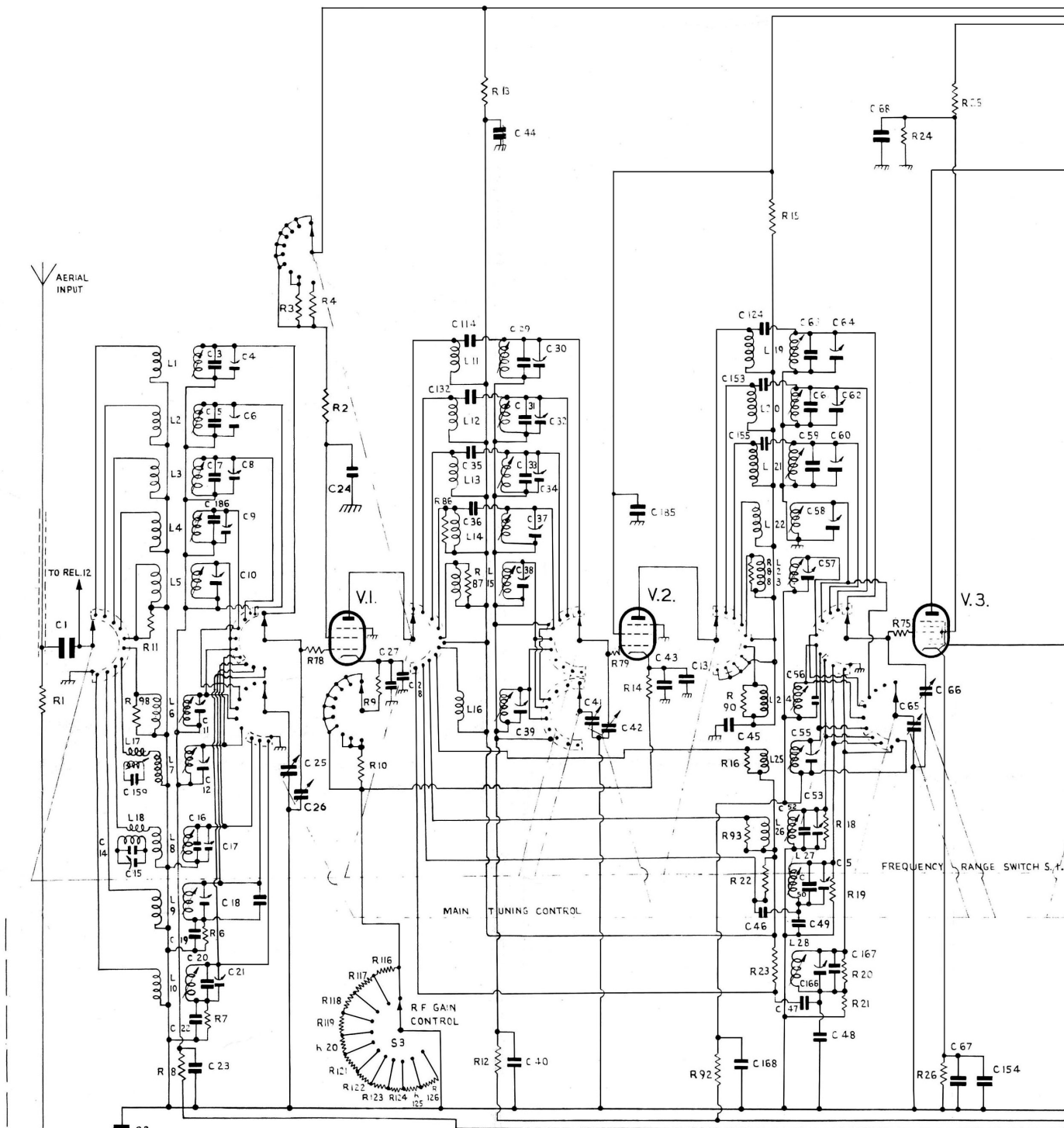
R115 2.3 Ohms

Please add the following capacitors:

C187 20 pF Silvered Mica (as C186)

C94 and C160, probably 0.01 $\mu$ F (as C178)

TM 22/11-2007



**VALVES**

V1. - 6BA6	V5 6AU6	V5 - 6AT6
V2 6BA6	V6 6BA6	VIC - 25L6G
V3 6BE6	V7 6BA6	VII - 6AL5
V4 6AU6	V8 6BA6	VII - VR75



6BA6  
6AU6



6BE6



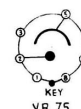
6AT6



25L6G



6AL5



VR75

**IMPORTANT**

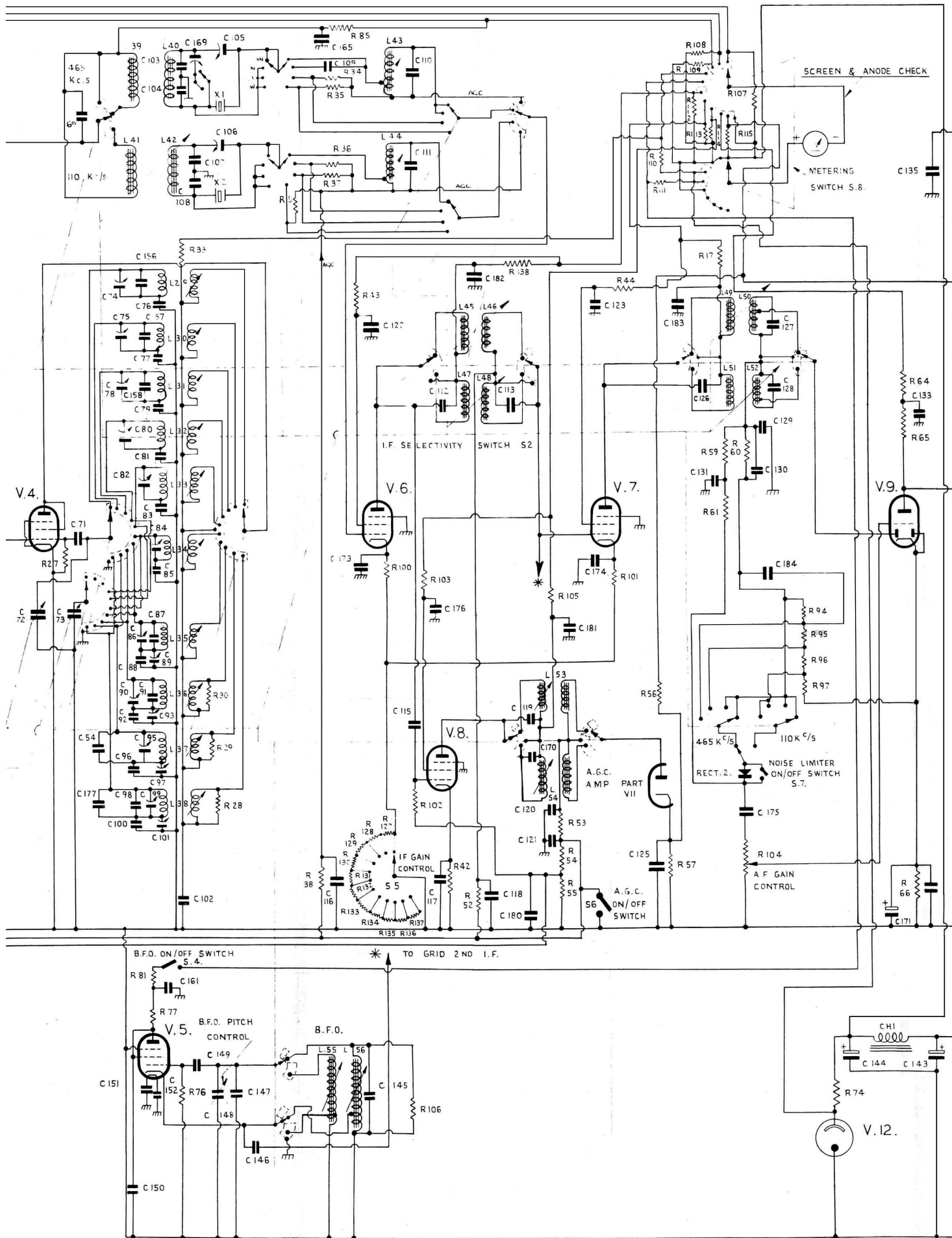
THE CHASSIS OF THIS RECEIVER MUST ALWAYS BE ISOLATED FROM TRUE EARTH. C.2 PROVIDES THE R.F. EARTH AND IS CONNECTED TO THE CABINET BY A FLEXIBLE PLUG LEAD.

**NOTE**

⊥ DENOTES TRUE EXTERNAL EARTH TO SHIPS HULL.  
 DENOTES CHASSIS EARTH.

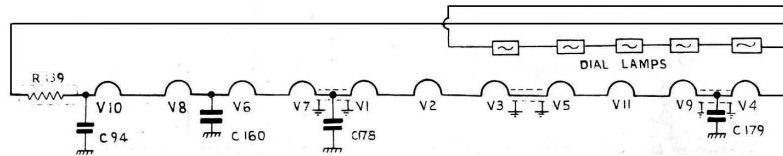
**NOTE 2**

THIS RECEIVER IS BASICALLY 100 - 115V. AC. OR DC. IF USED WITH HIGHER DC. VOLTAGES AN EXTERNAL DROPPING RESISTOR UNIT IS NECESSARY. IN THE CASE OF A.C. AN EXTERNAL STEP-DOWN TRANSFORMER MAY BE USED. FOR 100 - 115V. D.C. OR A.C., ONLY GREEN AND RED CORES OF THE MAINS CABLE MUST BE CONNECTED TOGETHER.



**NOTE 3**

RELAY COILS IN SERIES FOR 12 - 24 V.,  
 PARALLEL FOR 6 - 12 V., AS SHIPPED  
 COILS ARE SET FOR 6 - 12 V.



REVISIONS TO ORIGINAL ISSUE 1, 20 R. 52.

TECHNICAL MODIFICATIONS  
 ISSUE 2 19 10 52

TECHNICAL MODIF.  
 CIP. REFS CORRECTED  
 ISSUE 3 10 11 52

R50 RELAY SEC. RE  
 WAS CONNECTED TO Y  
 HT. LINE R71 & R72.  
 REVERSE C167 ADJ.  
 ISSUE 4 20 1 52

FREQ RANGE SWITCH  
 CONTACTS SHORTED  
 R79 WAS CONNECTED  
 TO CATHODE  
 ISSUE 5 22 1 52

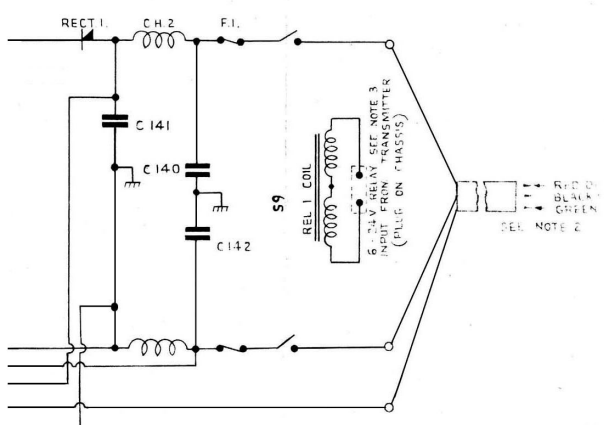
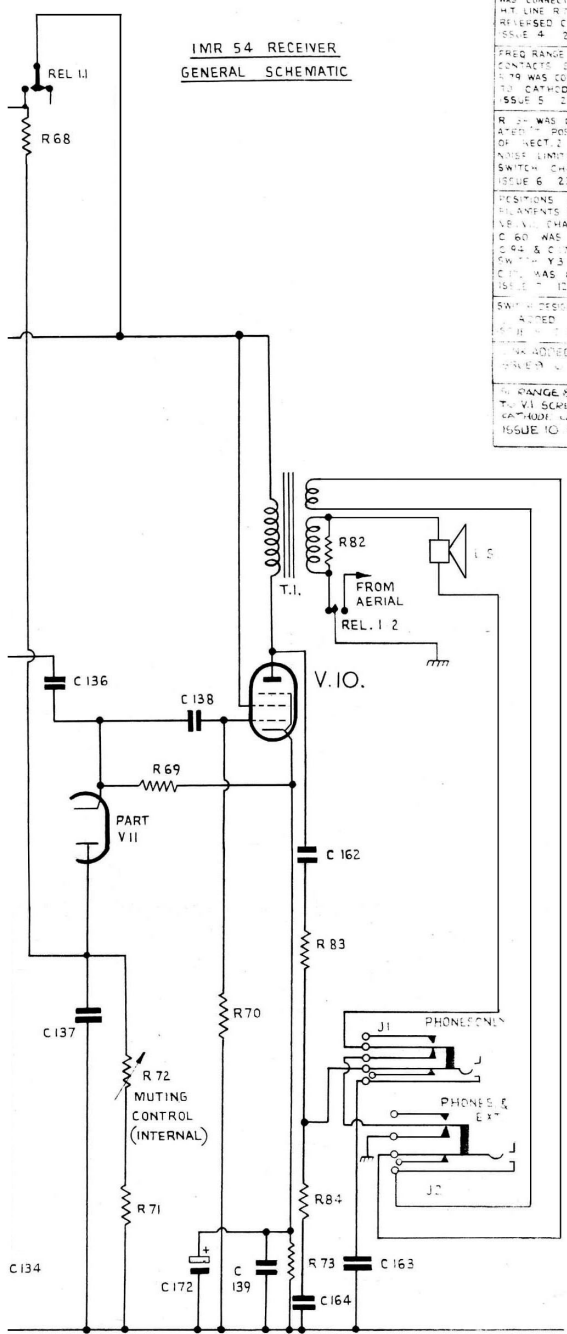
R74 WAS DISCON-  
 NECTED FROM POSIT. N  
 OF RECT. 2 AND  
 NOISE LIMITER  
 SWITCH CHANGED  
 ISSUE 6 23 12 52

POSITIONS OF  
 FILAMENTS VS. 46 V  
 V.B.V. CHANGED  
 C160 WAS 2118  
 C164 & C168 ADJ.  
 SW. TO Y3 CHANGE  
 C169 WAS C173  
 ISSUE 7 10 1 53

SWITCH DESIGNATIONS  
 ADDED  
 R78 " 2 55  
 C167 ADDED IN SE  
 W/ALY 7 60

FREQ RANGE SWIRIN  
 TO V1 SCHEMATIC  
 CATHODE CHANGE  
 ISSUE 10 20 6 53

**IMR 54 RECEIVER  
 GENERAL SCHEMATIC**



INTERNATIONAL MARINE RADIO CO. LTD.	
DRAWN D. L. M./AVK	LATE 20 R. 52.
CHECKED	APPROVED
IM. 1595	